

INVEST

with  ALTAVOLA
DESIGN



LED
CABINET
LIGHTS



LSD014-BK



LSD013-BK

code **LSD014-BK**

surface customizable anodized silver brushed linear anodized silver sandblasted

casing aluminum / anodized black / lamping LED 1W / Ra>80 / 70LM / Beam 10/20/30 degree / 2700K/3000K/4000K/6000K

installation IP20 cut-off dia 10mm hole for installation / maximum 25mm thickness board

code **LSD013-BK**

surface customizable anodized silver brushed linear anodized silver sandblasted

casing aluminum / anodized black / lamping LED 1W / Ra>80 / 70LM / Beam 10/20/30 degree / 2700K/3000K/4000K/6000K

installation IP20 cut-off dia 10mm hole for installation / maximum 25mm thickness board



LSD014-CR



LSD013-CR

code **LSD014-CR**

surface customizable  anodized silver brushed linear  anodized silver sandblasted

casing aluminum / chrome plated / lamping LED 1W / Ra>80 / 70LM / Beam 10/20/30 degree / 2700K/3000K/4000K/6000K

installation    IP20  cut-off dia 10mm hole for installation / maximum 25mm thickness board

code **LSD013-CR**

surface customizable  anodized silver brushed linear  anodized silver sandblasted

casing aluminum / chrome plated / lamping LED 1W / Ra>80 / 70LM / Beam 10/20/30 degree / 2700K/3000K/4000K/6000K

installation    IP20  cut-off dia 10mm hole for installation / maximum 25mm thickness board





code **LSD016**

surface customizable white paint similar to RAL9003 anodized silver sandblasted

casing aluminum / anodized black / lamping LED 1x1W / Ra>80 / 70LM / Beam 10/20/30 degree / 2700K/3000K/4000K/6000K

installation IP20 cut-off dia 10mm hole for installation / maximum 25mm thickness board

code **LSD017**

surface customizable white paint similar to RAL9003 anodized silver sandblasted

casing aluminum / anodized black / lamping LED 2x1W / Ra>80 / 140LM / Beam 10/20/30 degree / 2700K/3000K/4000K/6000K

installation IP20 cut-off dia 10mm hole for installation / maximum 25mm thickness board

code **LSD018**

surface customizable white paint similar to RAL9003 anodized silver sandblasted

casing aluminum / anodized black / lamping LED 3x1W / Ra>80 / 210LM / Beam 10/20/30 degree / 2700K/3000K/4000K/6000K

installation IP20 cut-off dia 10mm hole for installation / maximum 25mm thickness board



code **LDC365**

surface customizable white paint similar to RAL9003 anodized silver sandblasted

casing aluminum / anodized black / lamping LED 1x1W / Ra>80 / 70LM / Beam 10/20/**30** degree / 2700K/**3000K**/4000K/6000K

installation IP20 cut-off dia 28mm hole precisely for installation / minimum 10mm thickness board

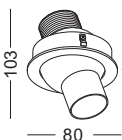


code **LDC368**

surface customizable white paint similar to RAL9003 anodized silver sandblasted

casing aluminum / anodized black / lamping LED 1x3W / Ra>80 / 120LM / Beam 10/20/**30** degree / 2700K/**3000K**/4000K/6000K

installation IP20 cut-off dia 40mm hole precisely for installation / minimum 10mm thickness board



code **LDC371**

surface customizable white paint similar to RAL9003 anodized silver sandblasted

casing aluminum / anodized black / lamping COB 6W / Ra>90 / 550LM / Beam 10/**23**/**38** degree / 2700K/**3000K**/4000K/6000K

installation IP20 cut-off dia 75mm hole precisely for installation / minimum 10mm thickness board



LDC366



LDC367



LDC369



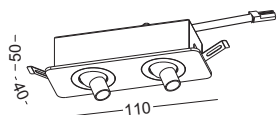
LDC370



LDC372



LDC373

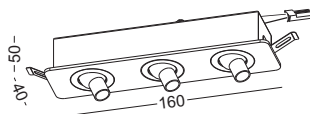


code **LDC366**

casing aluminum / anodized black / lamping LED 2x1W / Ra>80 / 140LM / Beam 10/20/30 degree / 2700K/3000K/4000K/6000K

installation IP20 cut-off 100x35mm hole precisely for installation / minimum 10mm thickness board

surface customizable white paint similar to RAL9003 anodized silver sandblasted

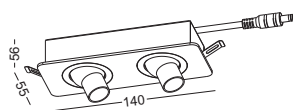


code **LDC367**

casing aluminum / anodized black / lamping LED 3x1W / Ra>80 / 210LM / Beam 10/20/30 degree / 2700K/3000K/4000K/6000K

installation IP20 cut-off 150x35mm hole precisely for installation / minimum 10mm thickness board

surface customizable white paint similar to RAL9003 anodized silver sandblasted

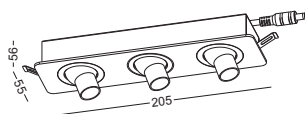


code **LDC369**

casing aluminum / anodized black / lamping LED 2x3W / Ra>80 / 240LM / Beam 10/20/30 degree / 2700K/3000K/4000K/6000K

installation IP20 cut-off 130x47mm hole precisely for installation / minimum 10mm thickness board

surface customizable white paint similar to RAL9003 anodized silver sandblasted

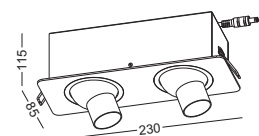


code **LDC370**

casing aluminum / anodized black / lamping LED 3x3W / Ra>80 / 360LM / Beam 10/20/30 degree / 2700K/3000K/4000K/6000K

installation IP20 cut-off 195x47mm hole precisely for installation / minimum 10mm thickness board

surface customizable white paint similar to RAL9003 anodized silver sandblasted



code **LDC372**

casing aluminum / anodized black / lamping COB 2x6W / Ra>90 / 1100LM / Beam 10/23/38 degree / 2700K/3000K/4000K/6000K

installation IP20 cut-off 210x77mm hole precisely for installation / minimum 10mm thickness board

surface customizable white paint similar to RAL9003 anodized silver sandblasted

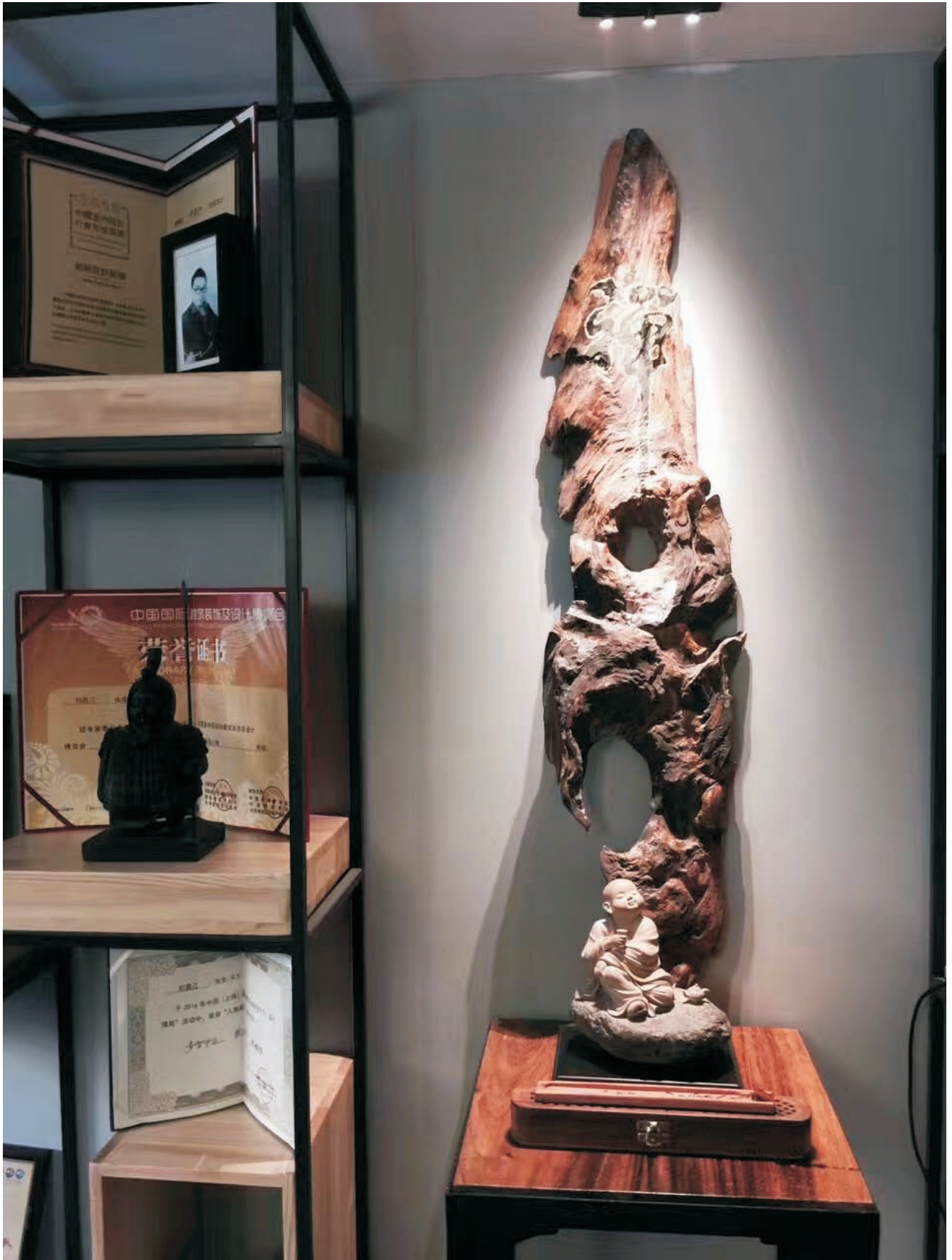


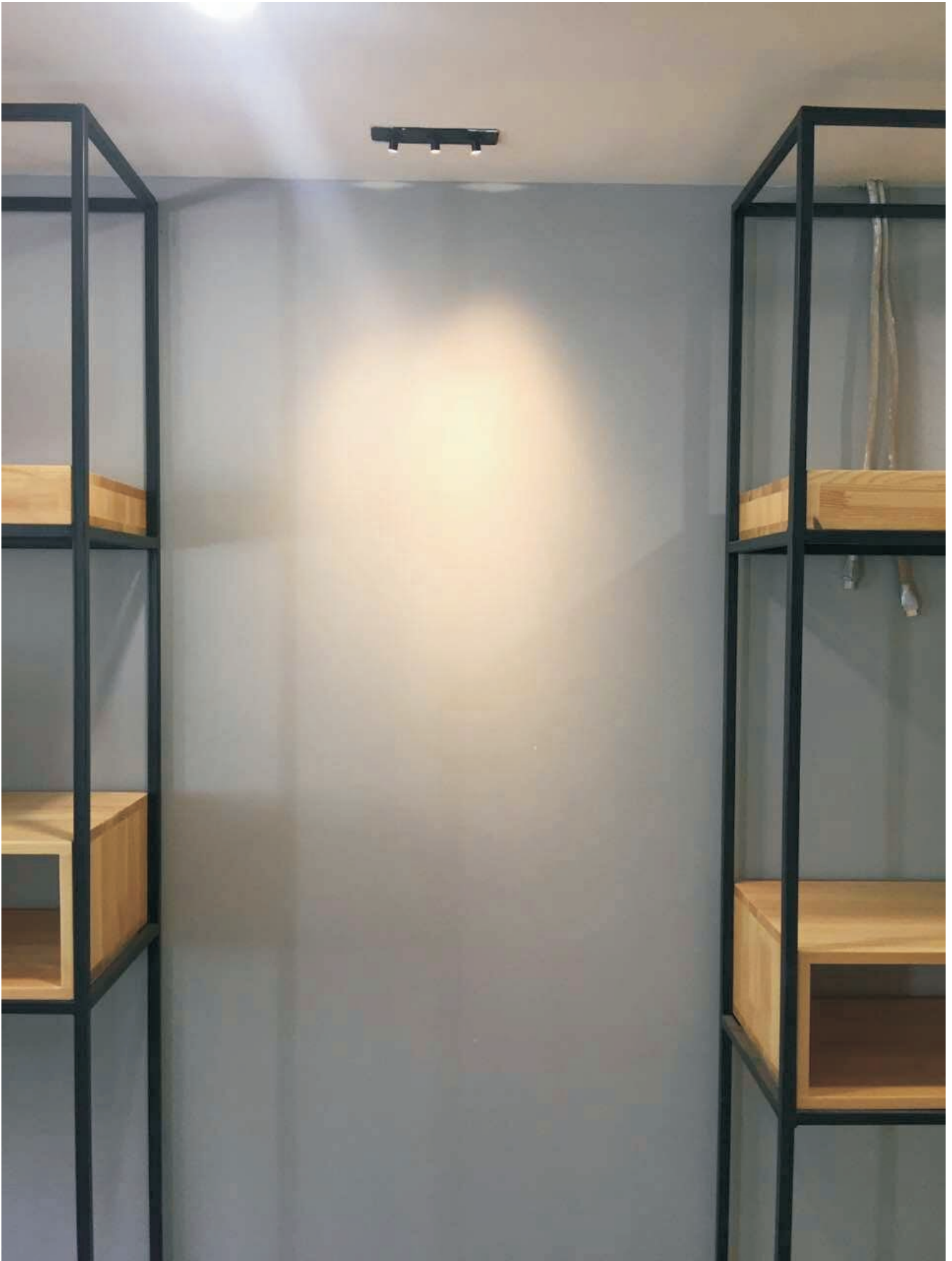
code **LDC373**

casing aluminum / anodized black / lamping COB 3x6W / Ra>90 / 1650LM / Beam 10/23/38 degree / 2700K/3000K/4000K/6000K

installation IP20 cut-off 320x77mm hole precisely for installation / minimum 10mm thickness board

surface customizable white paint similar to RAL9003 anodized silver sandblasted





INVEST

with  ALTAVOLA
DESIGN

Biuro Sprzedaży Polska

Piotr Stańczyk

invest@altavola-design.com

tel. +48 696 690 314

International Sales Office

Piotr Stańczyk

invest@altavola-design.com

phone. +48 696 690 314

Verkaufsbüro Deutschland

Piotr Stańczyk

invest@altavola-design.com

tel. +48 696 690 314